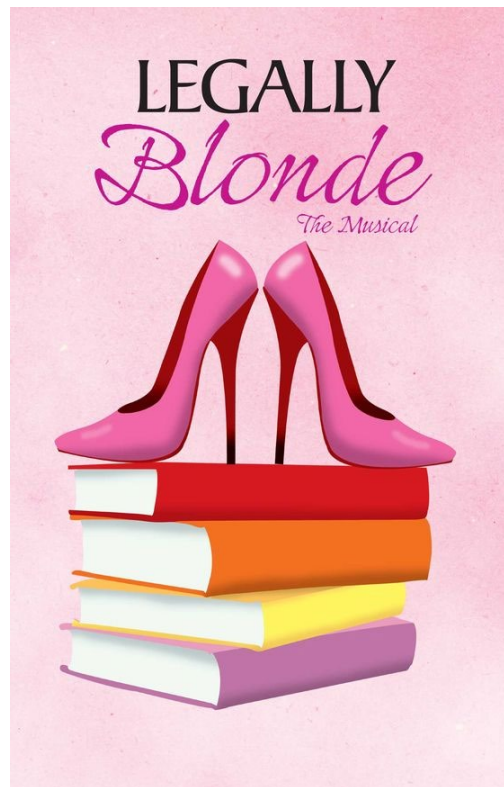


Legally Blonde
Lighting Script Treatment



This is a working document on the lighting concepts for the production of *Legally Blonde: The Musical*. The purpose of this script treatment is to communicate the world of the play in this production and to present inspirational and research photos for the lighting in the telling of this story. Any specific questions I have will be listed in red, however, each member of the design team is more than welcome to respond with any questions, comments, or concerns that they may have.

DESIGN CONCEPT

This production of *Legally Blonde* will acknowledge the recent #MeToo and #TimesUp movement present in the world today. This show was written during the third wave of feminism, which began in the mid-1990s, and is still relevant in the 21st century as we have been encountering the fourth wave, which began around 2012. This fun and energetic show highlights the ideas of sisterhood, being true to yourself, and resilience to keep moving forward in life. The lighting will heighten these ideas as we witness Elle's journey. While she is in California, Elle wholeheartedly embraces her femininity, social status, fashion, and the bond she shares with her sorority sisters; as a result, the lighting will incorporate a delicate, warm, and open feeling. When Elle makes choices that lead her to Harvard Law School to pursue the man of her dreams, she becomes exposed to a male dominant world of intellectuals that she is not accustomed to; therefore, the lighting will contrast her personality with a frigid and sharper feeling. Despite what she encounters at Harvard, Elle comes back as a stronger woman than before. The lighting will help give this woman an empowering and hopeful feeling in the end.

ACT ONE

SCENE 1: Delta Nu Sorority House, Old Valley Mall | Early Afternoon

The show opens with the Delta Nu girls in their sorority house, singing about how excited they are for Elle in hopes that she will be engaged by the end of the night. Chandeliers will be used to help establish the setting of the sorority house (*Image 1*). The rest of the lights will embrace warm, dainty colors and highlight these women from the sides to support their excitement for their fellow sorority sister (*Image 2*). To provide some contrast to this at times, there will be lush cool colors sweeping in from upstage and the front of house whenever we see the Delta Nu girls to incorporate some otherworldliness, as they are acting like a Greek chorus (*Image 3*). These colors will be more prominent during the traditional Delta Nu Engagement Chorale part in “Omigod You Guys.” Later, they go shopping with Elle to prepare for the potentially magical night. The lighting will make a smooth transition to the interior of an upscale shopping mall and keep warm colors but incorporate a more straw and golden aesthetic to embrace the upscale luxuries sorority women are perceived to enjoy (*Image 4*). Once their shopping trip comes to an end, the scenery and lighting will revert to the rose colors from the top of the scene.



Image 1



Image 2



Image 3



Image 4



Image 5



Image 6



Image 7

SCENE 2: Outdoor Restaurant | Night

We enter a dinner at an outdoor restaurant. Both Elle and Warner have different hopes as to how the dinner will end and we can feel the tension between them. Warner has decided to dump Elle because he needs someone more serious. The lighting will begin the scene with sweeping angles and rich colors to set a romantic mood (*Image 5*). The trees in the scenery will be elegantly lit and a full moon will brighten up the sky on the cyc (*Image 6*). This lushness will be taken further as Warner sings “Serious” until he ends the relationship. The lights will then slowly restore to a colder night look for the end of the scene when the romantic elements have faded while only shock and sadness remain (*Image 7*).

SCENE 3: Outside Elle’s Room | Morning

Elle is distraught after the breakup but is receiving support from her sisters as they wait outside of Elle’s Room. As they wait, the lighting will reintroduce the saturate color theme established for the Greek chorus (*Image 8*). Still incorporating her feminine color palette, the lighting will portray a warm interior and friendly sisterhood feeling but will be less energetic than before (*Image 9*). After she finally opens her door, Elle views a magazine and discovers the kind of woman Warner’s older brother has just proposed to. She finds inspiration to make herself become like the Warner’s highbrow future sister-in-law and decides to go to law school. The lighting will become more lively and hopeful as she works to gather the materials she needs for admission into Harvard (*Image 10*).



Image 8



Image 9

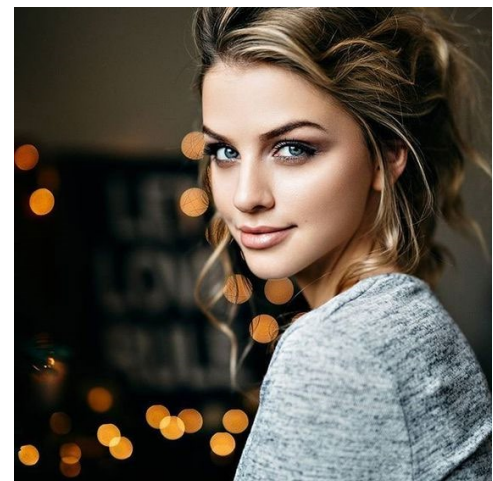
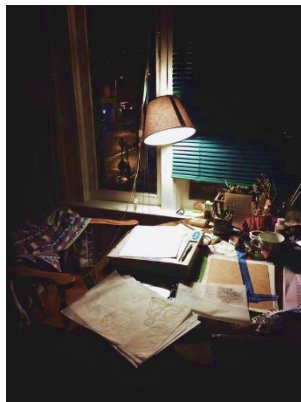


Image 10

SCENE 4: Elle's House, Elle's Desk, Harvard Law Admissions Office | Day & Night

Still in Delta Nu, the song "What You Want" brings us into the top of this scene. Now driven to get into Harvard, Elle changes her routine as she strives to meet the requirements for admittance. Lighting will help transport us to the various locations in this song by using organic textures and a bright blue sky to bring us outside when she speaks to her parents about her future education (*Image 11*). Lighting will also provide an isolated interior as Elle studies in her room with the help of lamp practicals, contrasting with others in the background as they attend parties with string lights and a more colorful scene (*Images 12 & 13*). The admissions office with the intellectual men viewing applications will have lighting that has a colder and sharper feel to it to establish the patriarchal world of Harvard (*Image 14*). At the end of the scene, her efforts prove to be successful and she is accepted into Harvard Law School.

*Image 11**Image 12**Image 13**Image 14***SCENE 5: Halls of Harvard, Callahan's Class | Afternoon**

In this scene, Elle has begun her studies at Harvard and while she finds her colleagues to be very intelligent, some of them are also incredibly rude. This is not the case for all of them, as she meets Emmett who is kind enough to help her. She later encounters Warner and the tasteful Vivienne and they all gather for Callahan's class. Because this is a place where there are many intellectuals and Elle is not the typical law student in both her appearance and personality, the lighting will have a paler and cooler feeling (*Image 15*). The lighting will also incorporate the use of shadows and textures, which will be prominent during Callahan's song to highlight his encouragement of competition and immorality to advance in their careers (*Image 16*).

*Image 15**Image 16*

SCENE 6: Callahan's Class | Afternoon

After Elle is kicked out of Callahan's class because of a comment Vivienne made, she questions where Vivienne's solidarity as a sister lies. Vivienne simply states that Elle was not prepared for class. Warner comes in, and Elle learns that Vivienne is currently his girlfriend, and she is shocked. After "Blood in the Water," the lighting will keep the cooler palette, but not embrace the textures and shadows (*Image 17*). The Delta Nu girls later come in and are encouraging Elle to be positive and believe that Warner still loves her. During this song, the lighting will be more sculptural and saturate to show we are witnessing Elle's feelings of defeat as she reevaluates her strategy to get Warner back. The lighting will change throughout "Positive" from being lush and cool with the interactions of the Delta Nu sisters, and slowly incorporate familiar and warmer rose tones as Elle gains confidence again (*Image 18 & 19*).

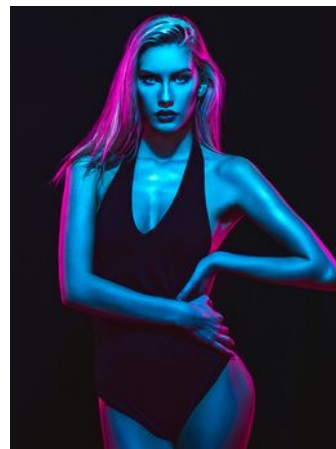
*Image 17**Image 18**Image 19***SCENE 7: The Hair Affair Salon | Late Afternoon**

Having had a such a rough first day, Elle decides to treat herself at a salon and asks to be made brunette because being a blonde at Harvard seems to have gotten her nowhere. She bonds with the hair dresser and they share their stories with each other. Paulette shares that she enjoys listening to Irish music and pretends she's in Ireland when she feels down and dejected as she sings "Ireland." Eventually, Vivienne and her friends enter and reluctantly invite Elle to a "costume" party they are having later in the week. The lighting in Paulette's shop will be chic and fun like what we saw when Elle was in California, but it will be more sophisticated and sculptural (*Image 20*). Vanity lights within the scenery will help give this space an even greater sense of style (*Image 21*). As we dive into Paulette's love for the Emerald Isle, lighting will incorporate greens and yellows reminiscent of the verdant country (*Image 22*).

*Image 20**Image 21**Image 22*

SCENE 8: Harvard Law Party, Elle's Dorm, Callahan's Class | Night and Day, Season's Change

The story then transitions into the Harvard Law party where Elle is the only one in costume, gets made fun of, briefly interacts with Warner, and is called a skank by Vivienne. Before she leaves the party, Elle drops a historical feminist fact about her costume and we see she is intelligent on her own level. The lighting for the party will have a slightly warmer interior compared to what we have seen at Harvard so far (*Image 23*). When Elle and Warner sing “Serious: Reprise,” the lighting will pull focus down to them and highlight them as they recall their former relationship (*Image 24*). This moment, however, will revert to a harsh familiar feeling when Vivienne antagonizes Elle (*Image 25*). Elle runs into Emmett while she is leaving the party and they have a pleasant conversation and they grow closer as they sing “Chip on My Shoulder.” He helps her with her studies and she appears to be more focused and open to learning the material. Callahan and Elle’s fellow students are shocked that she is doing so well. The lighting will keep with the colder palette to establish the Harvard setting, but the quality of light will shift to a more amiable and more empowering one as we see she hits the books harder (*Image 26*). The sweeping Delta Nu color motif will also reappear on stage as they sing throughout the song (*Image 27*).

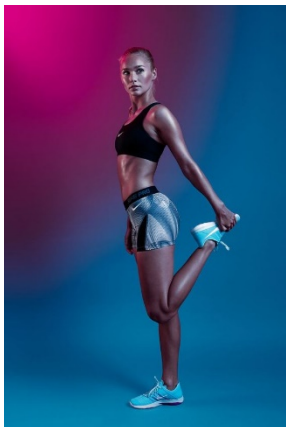
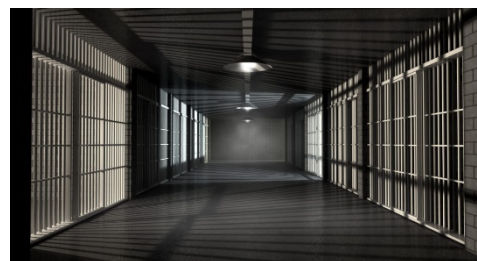
*Image 23**Image 24**Image 25**Image 26**Image 27*

SCENE 9: Dewey's Trailer, Callahan's Class | Afternoon

In the next scene, we start at Dewey's trailer where Elle and Emmett have chosen to support Paulette in regaining custody of her beloved dog. Elle speaks out and explains the legal justification of why Paulette can take her Rufus back and we see just how far Elle is coming in her law studies and is starting to use what she's learning in daily life. The lighting for this portion of the scene will have a rough, cool, exterior quality and then shift to a happier feel when they get custody of Rufus (*Image 28 & 29*). Later in the scene, we transition back to the school where Callahan has posted the list of the select students who will intern with his law firm. To the shock of many, Elle Woods has made that list and shares with everyone that this is the best thing that has happened to her in the song "So Much Better." To highlight this moment of excitement in this stern place, the lighting will utilize a harsh and cold look, but incorporate subtle warmth and softness similarly to the previous scene (*Image 30*).

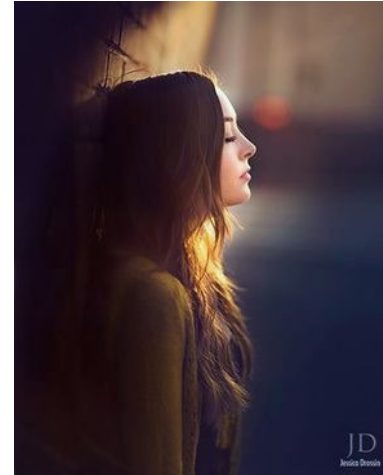
*Image 28**Image 29**Image 30***ACT TWO****SCENE 1: Conference Room, Correctional Facility | Afternoon**

The second act begins with Callahan, his interns, and Emmett watching a work out video in the conference room. It is time for the interns to shine as Callahan is informing all of them of the case they will be working on. During the moments of the workout video, the lighting will be energetic and use bold colors to show the fun and intensity of these workouts during "Whipped Into Shape" (*Image 31*). During the conference room conversations, the lighting will maintain the cool, shadowy harshness that feels like being at Harvard (*Image 32*). Shortly after this, we transition into the correctional facility for the interns to meet with their client, Brooke Wyndham. The lighting will keep the coldness but incorporate linear jail textures as well (*Image 33*). As the scene progresses and Elle refuses to share Brooke's alibi with her legal team, the linear textures will slowly dissipate, but the cool harshness will remain. During the final moments when Emmett and Elle are speaking about their trusting and helping each other, the lights will have a slightly warmer and hopeful feeling (*Image 34*).

*Image 31**Image 32**Image 33**Image 34*

SCENE 2: Hansen-Harkness Department Store | Afternoon

The next scene in this act begins in a department store where Elle and Emmett are shopping for clothing for Emmett. Elle is happy and excited to help Emmett with his looks to impress Callahan, and during they both realize they have feelings for each other. The lighting for this scene is overall cool and inviting in this store (*Image 35*). As Elle and Emmett share their thoughts out loud, the lights will sculpt and isolate them more to highlight them during their pensive moments as they sing “Take it Like a Man” (*Image 36*).

*Image 35**Image 36***SCENE 3: The Hair Affair Salon | Early Afternoon**

The play then shifts into the salon and we see Elle getting her nails done by Paulette in preparation for the trial. The new UPS delivery guy, Kyle, sweeps in and has Paulette completely infatuated. Elle teaches her the Bend and Snap move and its unfailing success to attract someone of the opposite sex. By the end of this scene, Paulette tries the Bend and Snap when Kyle returns, and she accidentally breaks his nose. Overall, this scene will have some semi-lush colors and give a cosmopolitan feeling to it (*Image 37 & 38*). This will be pushed even further with more saturate colors when they are singing the “Bend and Snap” and embrace the move’s fun (*Image 39*).

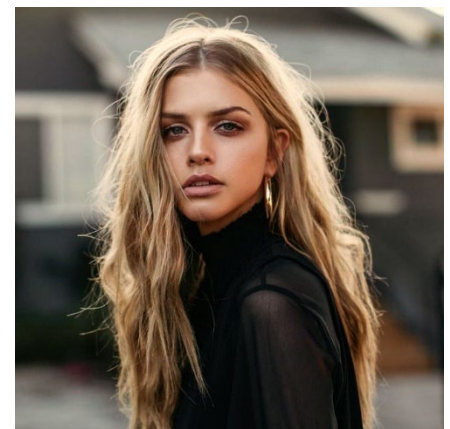
*Image 37**Image 38**Image 39*

SCENE 4: Courtroom | Afternoon

It is the third day of the Brooke Wyndham trial and Nikos Argitakos is being interrogated on the stand. He claims he is Brooke's lover, but Elle has looked at details in his mannerisms and suggests that he might be gay. Emmett trusts Elle's instincts and cleverly tricks Nikos into acknowledging his true sexuality. The lighting for this scene will maintain the overall harshness established in the world of justice but utilize warmer tones (*Image 40*). When Elle demonstrates the "bend and snap" move and Nikos does not react, the lighting will slowly begin to pull focus and highlight Nikos so his moves can be seen by everyone. When the song "Gay or European" begins, Nikos will be isolated, yet unaware he is under surveillance during his suspenseful interrogation (*Image 41*). The more open courtroom will be restored once Nikos says he is gay, as this has been a victory for Callahan's team.

*Image 40**Image 41***SCENE 5: Conference Room, Elle's Dorm | Late Evening, Night**

The courtroom victory is followed by champagne party for the legal team that Callahan has thrown. When the celebration ends, everyone starts going home, yet Callahan asks for Elle to stay behind. For the champagne party, lighting will have a brighter, festive feeling to it (*Image 42*). After everyone leaves, Callahan makes a bold and inappropriate pass at his student which she rejects and is fired as a result. During Callahan's confrontation, the lighting will be at its harshest (*Image 43*). Elle breaks the news to Emmett that she is returning home and hopes they will keep in touch. The lighting will transform the scene to a bittersweet, warm one when Emmett and Elle have this conversation (*Image 44*).

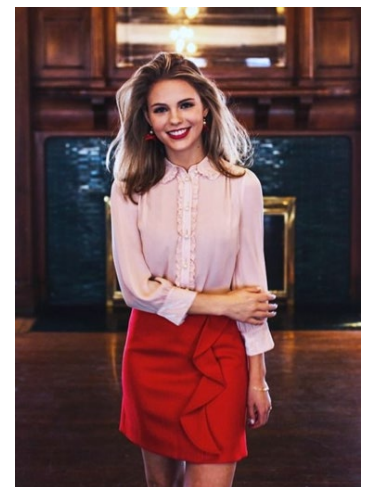
*Image 42**Image 43**Image 44*

SCENE 6: The Hair Affair | Late Morning

Sparks have been flying between Paulette and Kyle when we return to the salon. Elle comes in to bid her goodbyes before she returns home. Vivienne steps forth, offers her support, and encourages Elle to get back in the game. Elle emerges as a stronger, better version of herself who still embraces the essence of her personality. The lighting for this will begin in some semi-lush colors and give a cosmopolitan feeling to the scene (*Image 45*). When Vivienne sings the reprise version of “Legally Blonde,” we see the two worlds that comprise Elle begin to blend. The lighting will keep the sophisticated style of the Hair Affair but incorporate the more feminine pinks that we saw with the Elle in her sorority house (*Image 46*). We will be able to see and feel that Elle is more empowered than ever and has finally found her strength and voice as a woman in a difficult environment (*Image 47*).

*Image 45**Image 46**Image 47***SCENE 7: The Courtroom, Wyndham Mansion Restroom, Harvard Graduation | Afternoon**

The story moves to another day at the Wyndham trial, however, instead of keeping Callahan, Brooke has chosen to be represented by Elle with Emmett supervising her. After a series of what seems like ridiculous moments from Elle, including a visit to the bathroom where Chutney washed her hair, she wins the case and proves Brooke is innocent. Her journey ends on a happy and successful note, but not one that she expected when first entering Harvard. She graduates at the top of her class and proposes to Emmett. The lighting for this scene will begin with a soft, pale, cool colors in the courtroom and Wyndham Mansion that slowly work their way to softening and warming up as Elle wins her case (*Image 48 & 49*). The warmth takes a more sophisticated turn as we end the show with the graduation. Elle succeeded in becoming a good lawyer and stayed true to herself in the end (*Image 50*). The final moment will include Elle holding a photo of herself that is glowing amid the wall of male portraits at Harvard.

*Image 48**Image 49**Image 50*